

DM HALL

To Let

Industrial

Block 9A, Unit B,
South Avenue,
Blantyre, G72 0XB



 Video available

1,050 sq m
(11,300 sq ft)

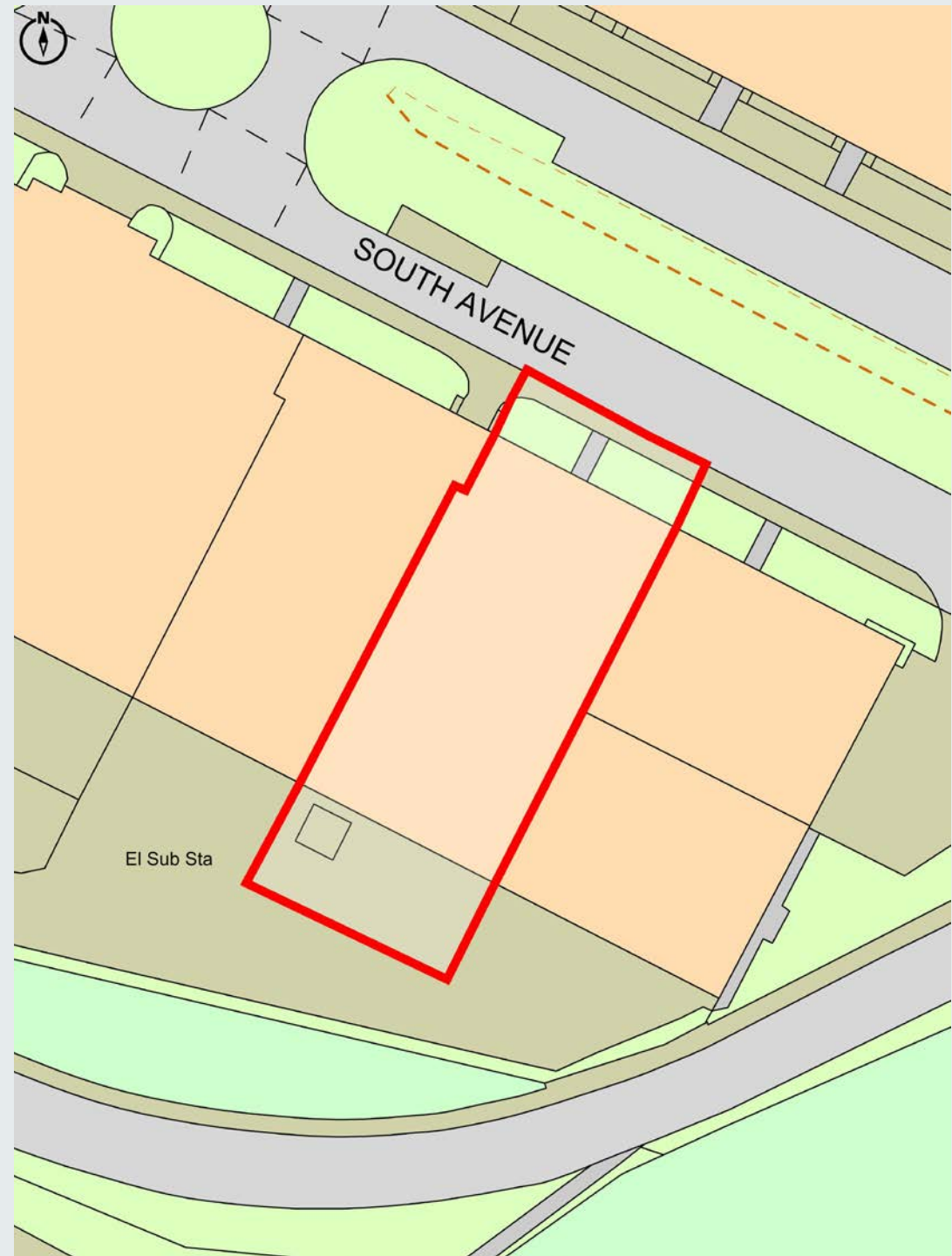
Property Details

- Fully refurbished industrial premises.
- Established industrial estate with close links to motorway network.
- Plentiful car / vehicle parking provisions.
- Two overhead cranes with capacities of 2 and 3 tonnes.
- OFFERS OVER £65,000 PER ANNUM INVITED.

LOCATION

Blantyre Industrial Estate is a busy, established industrial location adjacent to the A725 East Kilbride Expressway and approximately 1 mile south west of Junction 5 of the M74 motorway. The M73, M8 and M80 motorways are within 4 miles.

Blantyre is located within South Lanarkshire and lies around 12 miles south east of Glasgow, 5 miles north east of East Kilbride and 1 mile west of Hamilton.



Property Details

DESCRIPTION

The property comprises mid-terraced industrial premises with single storey offices to the front and a workshop to the rear with loading off a shared yard has been fully refurbished to a high standard.

The building is of steel frame and brick construction with a flat roof over the offices and a North light roof structure over the workshop incorporating glazed panels.

The offices comprises a series of private rooms, toilets and staff accommodation and leading into the open plan workshop, which contains a steel framed mezzanine deck and two overhead cranes having capacities of 2 and 3 tonnes.

SPECIFICATIONS

- 3 phase electricity
- Gas supply
- Electrical operated roller shutter door (3.75 meters)
- Energy efficient LED lighting throughout
- Internal eaves height of 5.5m

ACCOMMODATION & FLOOR AREAS

We calculate the property to have a gross internal floor area of 1050 sq.m (11,300sq.ft), with a 2693 of 85 sq.m (915 sq.ft), or thereby.

RENT

The property is available on a new full repairing and insuring lease on terms to be agreed. Rental offers in excess of £65,000 per annum are invited.

ENERGY PERFORMANCE

A copy of the Energy Performance Certificate (EPC) for the subjects is available upon request.



Property Details

NON DOMESTIC RATES

According to the Scottish Assessors' Association website, the subjects are noted to have a Rateable Value of £32,500 per annum.

LEGAL COSTS

Each party will be responsible for paying their own legal costs incurred in this transaction.

VAT

All prices quoted are exclusive of VAT which may be chargeable.

VIEWING ARRANGEMENTS

Strictly by contacting the sole selling/letting agents.

ANTI MONEY LAUNDERING

Under the Money Laundering, Terrorist Financing and Transfer of Funds (Information on the Payer) Regulations 2017, DM Hall are legally required to complete due diligence on purchasers and vendors. Once an offer has been accepted, the prospective purchaser(s)/occupier(s) shall be required to provide, as a minimum, proof of identity and residence and proof of funds for the purchase before the transaction can proceed.

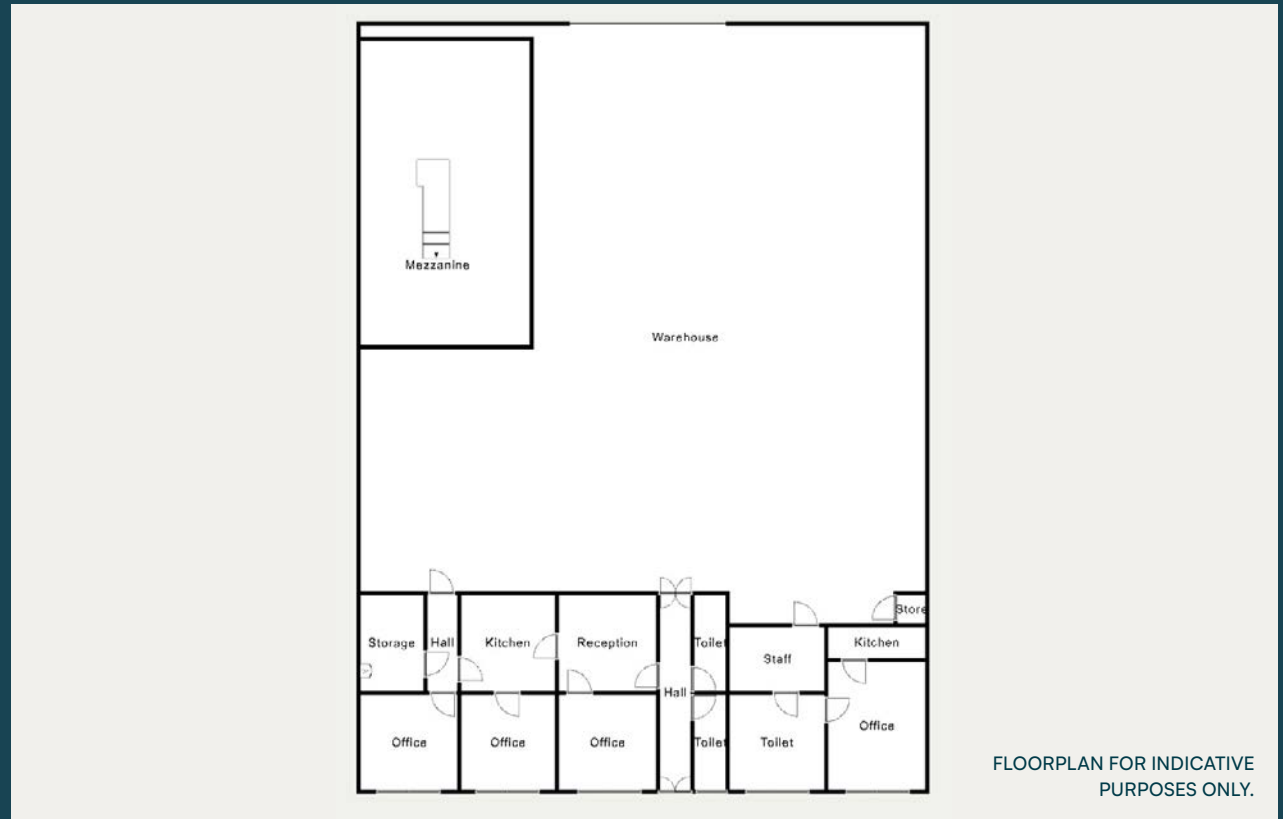


Video available

DM HALL



Regulated by
RICS



FLOORPLAN FOR INDICATIVE
PURPOSES ONLY.

Make an enquiry

Jacqueline Towie
01698 284939
jacqueline.towie@dmhall.co.uk

Jonathan McManus
0141 332 8615
Jonthan.mcmanus@dmhall.co.uk

DM Hall
Commercial Department
Unit 3 Cadzow Park,
82 Muir St, Hamilton, ML2 6BJ
01698 284 939

IMPORTANT NOTE: DM Hall for themselves and for the vendors or lessors of this property, whose agents they are, give notice that: (i) The particulars are set out as a general outline only for the guidance of intended purchasers or lessees and do not constitute, nor constitute part of, an offer or contract. (ii) All descriptions, dimensions, reference to condition and necessary permissions for use and occupation, and other details are given without responsibility and any intended purchasers or tenants should not rely on them as statement or representation of fact but must satisfy themselves by inspection or otherwise as to the correctness of each of them (iii) No person in the employment of DM Hall has any authority to make or give any representation or warranty whatever in relation to the property. (iv) All prices, premiums and rents quoted are exclusive of VAT. (v) The information contained in these particulars has been checked and, unless otherwise stated, it is understood to be materially correct at the date of publication. After these details have been printed, circumstances may change outside our control (vi) These particulars are provided for record purposes only and are not intended to create, nor to be relied upon as creating, any contractual relationship or commitment. Any contract shall only be entered into by way of our clients' solicitors.