


TO LET GROUND FLOOR RETAIL SPACE

CU1 365 • GLASGOW HARBOUR TERRACES • G11 6FB

DM HALL
CHARTERED SURVEYORS

Commercial Department
12 Bothwell Street, Glasgow, G2 6LU
0141 332 8615

- 
- Attractive commercial unit within Glasgow Harbour.
 - Stunning outlook to the River Clyde.
 - Ideally suited for a café, convenience store or a variety of alternative uses, subject to planning.
 - Finished to shell specification.
 - Net Internal Area of 99.13 sq.m (1,067 sq. ft.) approx.
 - Offers over £20,000 per annum are invited.

LOCATION

The subject property is located within Dandara Livings new Granary Quay development, forming part of the overall 2,500-unit Glasgow Harbour masterplan. Sitting on the former Meadowside Granary, between Meadowside Quay Walk and Glasgow Harbour Terraces. The 16-storey development comprises 342 new built BtR apartments and resident amenities including a gym.

The development benefits from numerous means of transport being in close proximity to Patrick Overground Station and the Clydeside Expressway, both providing quick access to the Clyde Tunnel and the M8. Various bus routes, such as the No.2 and No.3 are available within the immediate vicinity of the development, providing access to Glasgow City Centre only 3 miles away.

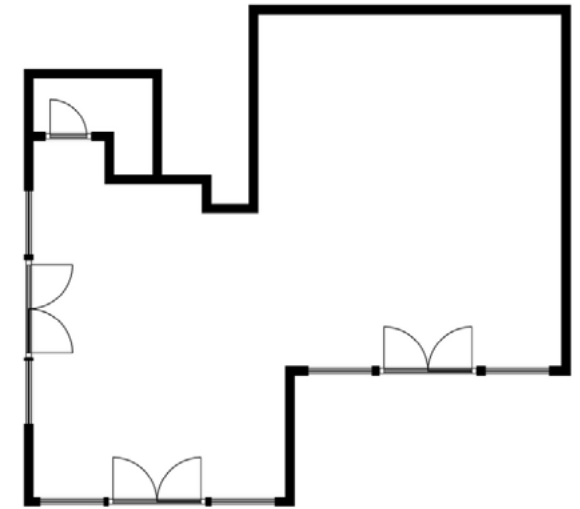
DESCRIPTION

The subject property comprises a ground floor retail unit, facing out over the river Clyde.

The unit is fit out to a shell specification, with glazed frontages providing excellent natural lighting and access to an additional paved area on the terrace.

The premises is serviced by mains electricity, water and waste drainage.

Access is via secured entry with a private entrance. Further access is located on the south elevation from the terrace.



ACCOMODATION

Total Net Internal Area of 99.13 sq.m.
(1,067 sq. ft.) approx.

RATES

On practical occupation, the subject property will require assessment for Rating purposes.

LEASE TERMS

Rental offers over £20,000 per annum are invited.

VAT

All prices quoted are exclusive of VAT, where applicable.

ENTRY

Entry is available upon completion of legal formalities.

LEGAL COSTS

Each party to be responsible for their own legal costs incurred during the transaction.

VIEWING & FURTHER INFORMATION

Strictly by prior arrangement with:-

Claire Hutton

Tel: 07876 541654

e-mail: Claire.hutton@dmhall.co.uk

OR

Leah Sellers

Tel: 07879 626448

e-mail: Leah.Sellers@dmhall.co.uk

DATE OF PUBLICATION: MARCH 2024

REFERENCE: WSA2563

Commercial Department
12 Bothwell Street, Glasgow, G2 6LU
0141 332 8615

IMPORTANT NOTE: D.M. HALL FOR THEMSELVES AND FOR THE VENDORS OF THIS PROPERTY, WHOSE AGENTS THEY ARE, GIVE NOTICE THAT: I) THE PARTICULARS ARE SET OUT AS A GENERAL OUTLINE, ONLY FOR THE GUIDANCE OF INTENDED PURCHASERS OR LESSEES AND DO NOT CONSTITUTE, NOR CONSTITUTE PART OF, AN OFFER OR CONTRACT. II) ALL DESCRIPTIONS, DIMENSIONS, REFERENCE TO CONDITION AND NECESSARY PERMISSIONS FOR USE AND OCCUPATION, AND OTHER DETAILS ARE GIVEN WITHOUT RESPONSIBILITY AND ANY INTENDING PURCHASERS OR TENANTS SHOULD NOT RELY ON THEM AS STATEMENT OR REPRESENTATIONS OF FACT, BUT MUST SATISFY THEMSELVES BY INSPECTION OR OTHERWISE AS TO THE CORRECTNESS OF EACH OF THEM. III) NO PERSON IN THE EMPLOYMENT OF D.M. HALL HAS ANY AUTHORITY TO MAKE OR GIVE ANY REPRESENTATION OR WARRANTY WHATSOEVER IN RELATION TO THIS PROPERTY. IV) ALL PRICES, PREMIUMS AND RENTS QUOTED ARE EXCLUSIVE OF VAT. V) THE INFORMATION CONTAINED IN THESE PARTICULARS HAS BEEN CHECKED AND, UNLESS OTHERWISE STATED, IT IS UNDERSTOOD TO BE MATERIALLY CORRECT AT THE DATE OF PUBLICATION. AFTER THESE DETAILS HAVE BEEN PRINTED, CIRCUMSTANCES MAY CHANGE OUTSIDE OUR CONTROL.

DM HALL
CHARTERED SURVEYORS

