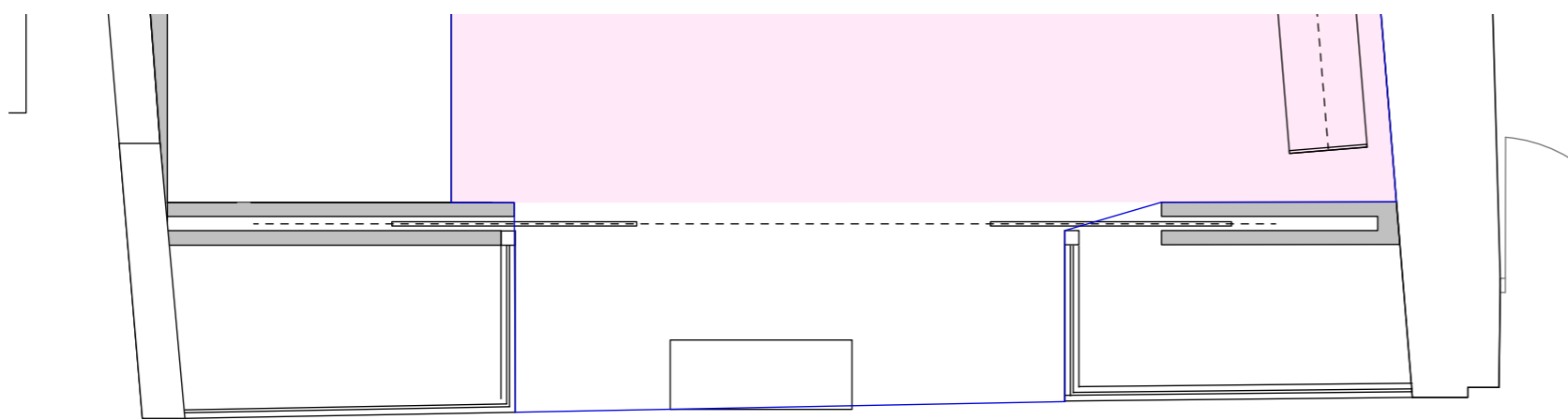
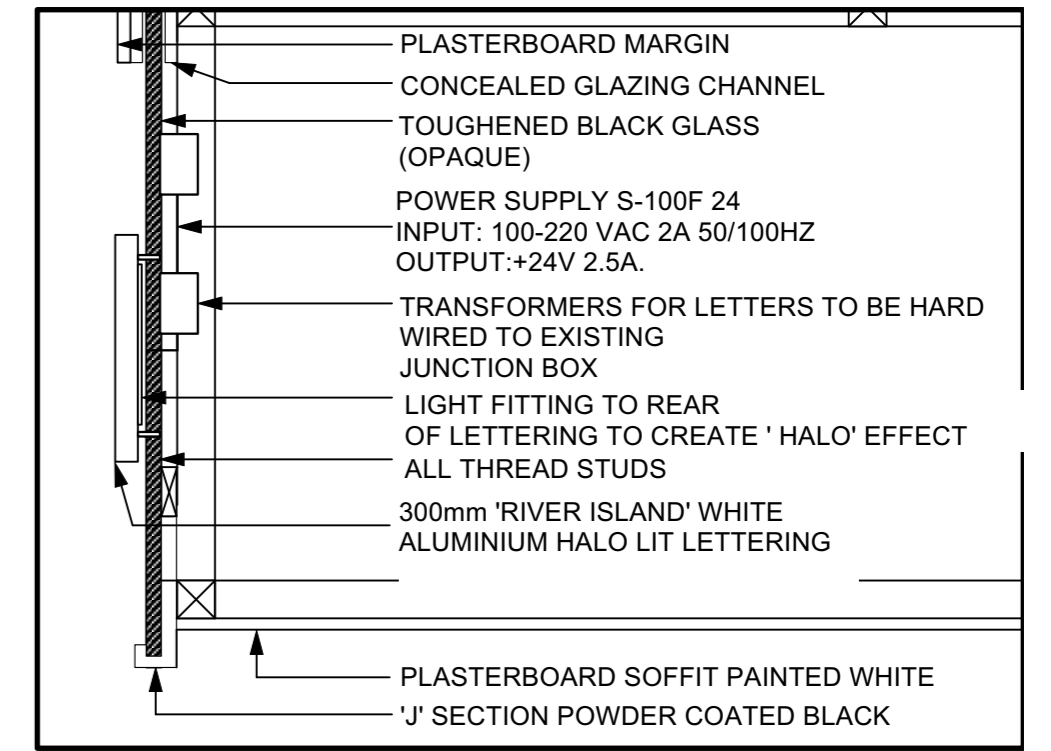




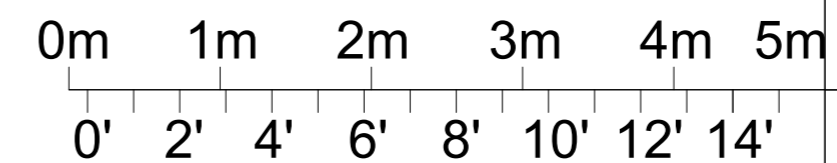
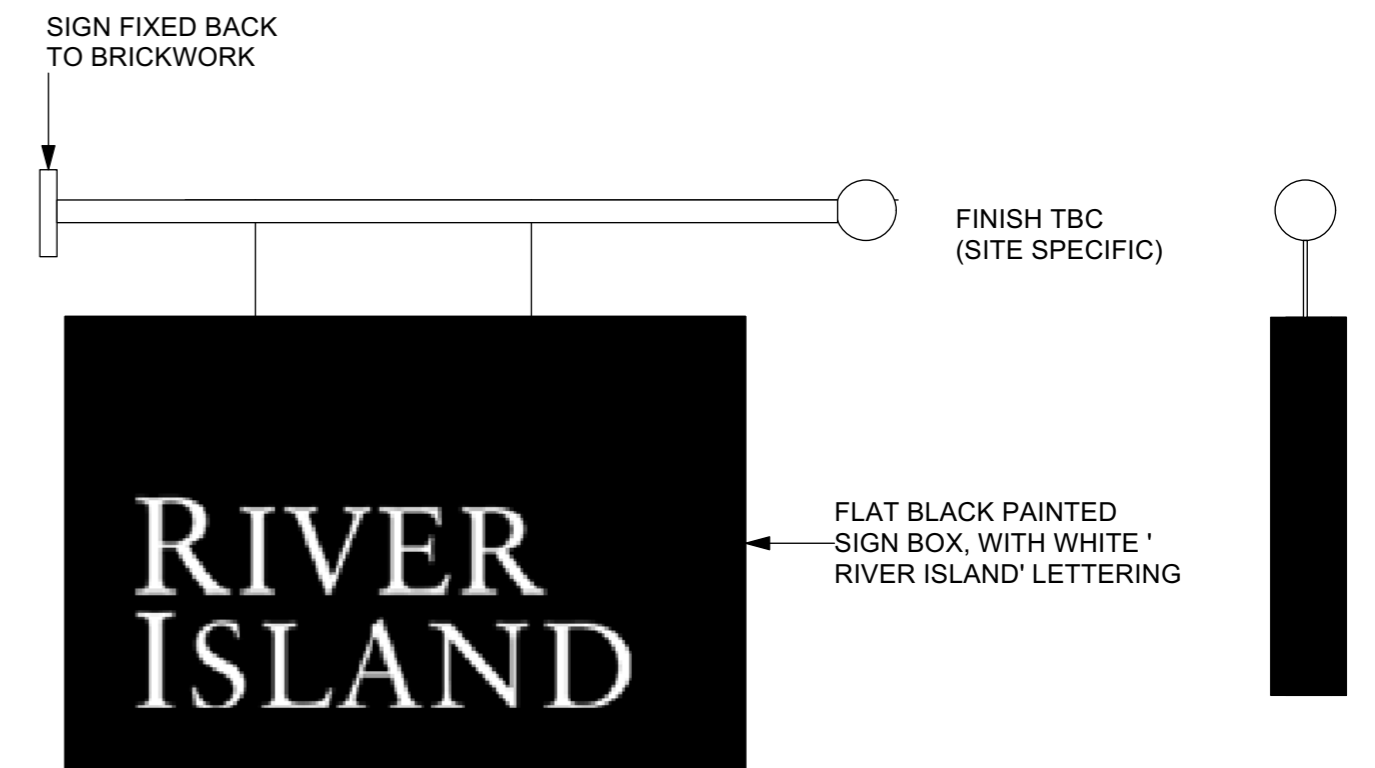
ELEVATION



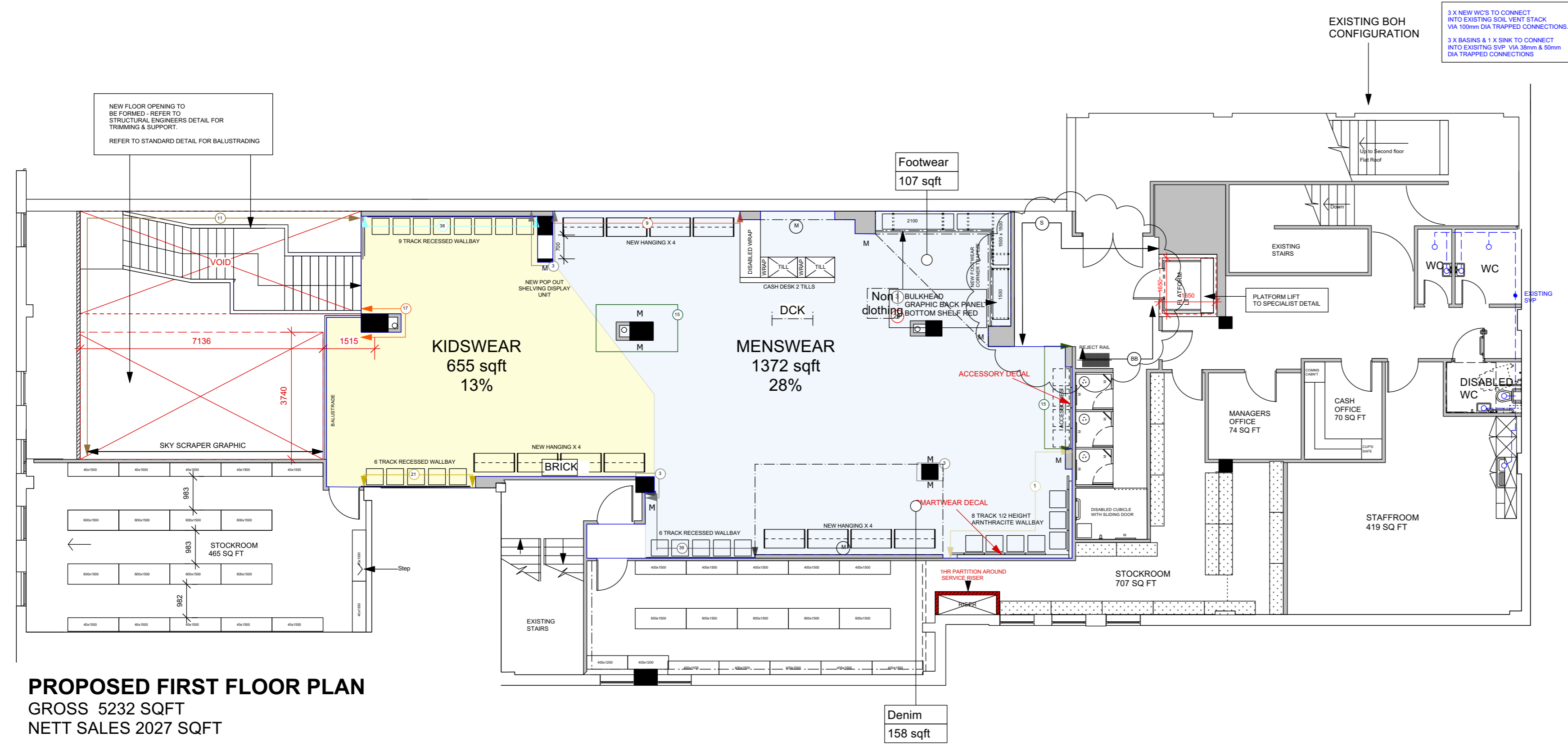
PLAN



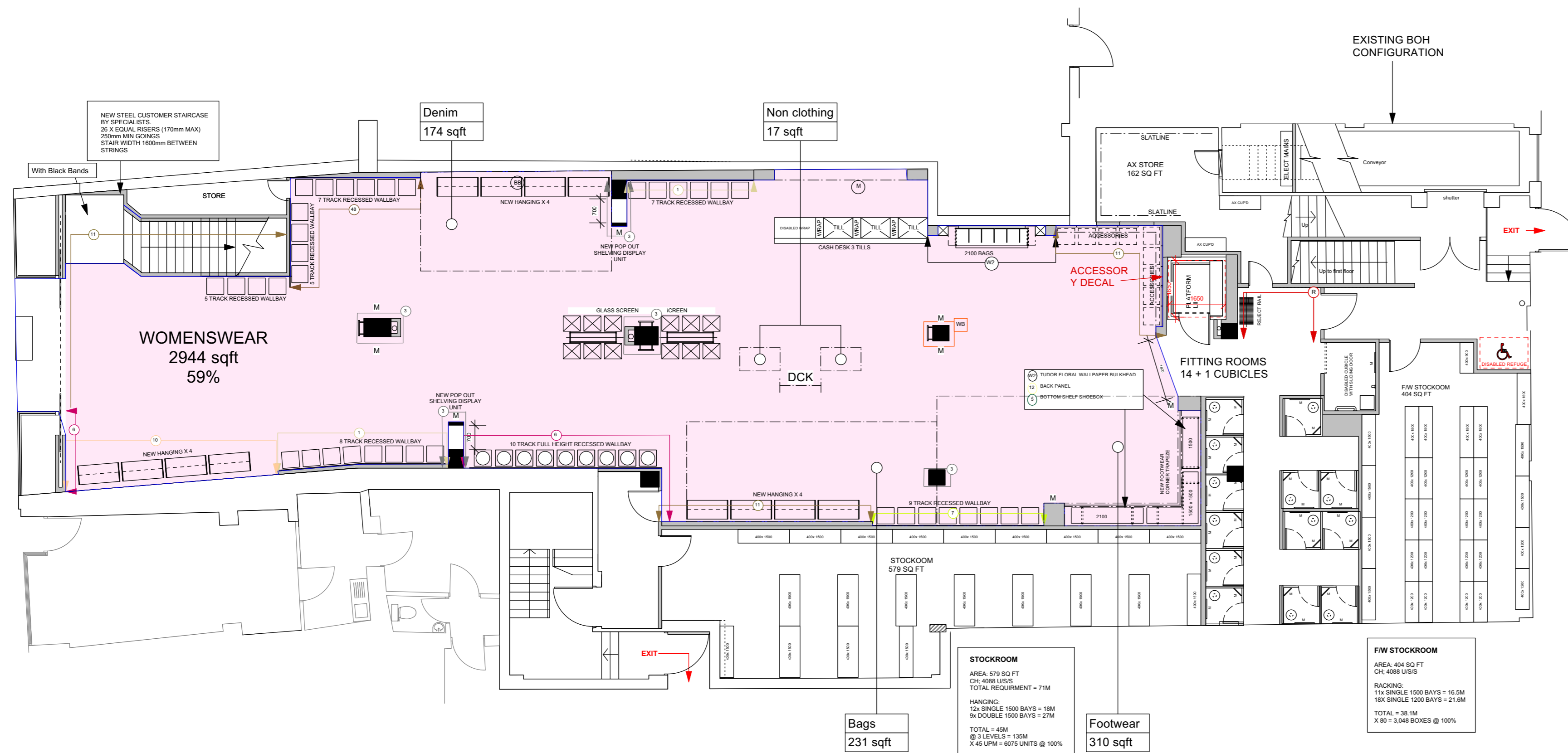
DETAIL A - LED LETTERING DETAIL 1:10



REVISIONS	DESCRIPTION	DATE	INITIAL
<b>RIVER ISLAND</b>			
T: 020 8991 4500 F: 020 8998 1171 E: cad@river-island.com Chelsea House - West Gate - London - W5 1DR			
	68-70 HIGH STREET DUMFRIES	26.07.18	
		1:50 @ A2	
	SHOPFRONT		AJ
			872.18.01



**PROPOSED FIRST FLOOR PLAN**  
GROSS 5232 SQFT  
NETT SALES 2027 SQFT

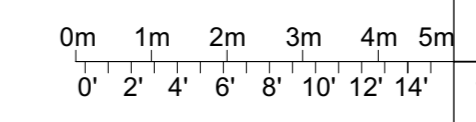


**PROPOSED GROUND FLOOR PLAN**  
GROSS 5359 SQFT  
NETT SALES 2944 SQFT

REVISIONS	DESCRIPTION	DATE	INITIAL
X		XX.XX.XX	XX

# RIVER ISLAND

PROJECT	68-70 HIGH STREET DUMFRIES	CHEK'D	
		DATE	12.10.21
		SCALE	1:100 @ A1
TITLE	GROUND AND FIRST FLOOR GA PLANS	DRAWN BY	HB
		DRAWING NO.	143.21.02





FIRST FLOOR LIGHTING

LIGHTING LEGEND	
<b>SUSPENDED</b>	<b>EMERGENCY</b>
<ul style="list-style-type: none"> <li>— SUSPENDED (BY 100mm) RECESSED LED TUBE LIGHT</li> <li>— SUSPENDED (BY 100mm) RECESSED LED TUBE LIGHT</li> </ul>	<ul style="list-style-type: none"> <li>— LED EMERGENCY IN WHITE OVER BARRIERS</li> <li>— EMERGENCY IN RED</li> <li>— IN LED EMERGENCY FITTING OVER BARRIERS</li> <li>— SUSPENDED BLACK LED EXIT OVER PASSAGE BARRIERS</li> <li>— FLUORESCENT EMERGENCY LIGHT FITTING</li> <li>— FLUORESCENT EMERGENCY EXIT LIGHT FITTING OVER BARRIERS</li> </ul>
<b>TRACK MOUNTED</b>	<b>TRACK</b>
<ul style="list-style-type: none"> <li>— PROTRUDING LED FLUORESCENT TRACK MOUNTED WHITE</li> <li>— TRACK LED TRACK MOUNTED WHITE</li> <li>— LED TRACK MOUNTED WHITE (RECESSED) TRACK MOUNTED WHITE</li> </ul>	<ul style="list-style-type: none"> <li>— WHITE SURFACE RECESSED LED TRACK</li> <li>— WHITE RECESSED SURFACE LED TRACK</li> <li>— BLACK SURFACE RECESSED LED TRACK</li> <li>— BLACK RECESSED SURFACE LED TRACK</li> <li>— BLACK SURFACE RECESSED LED TRACK</li> <li>— BLACK RECESSED SURFACE LED TRACK</li> </ul>
<b>RECESSED</b>	
<ul style="list-style-type: none"> <li>— NEW LED RECESSED DOWNLIGHT IN WHITE</li> <li>— REAR TYPICAL LED DOWNLIGHT</li> <li>— NEW LED RECESSED DOWNLIGHT IN WHITE</li> </ul>	
<b>SURFACE MOUNTED</b>	
<ul style="list-style-type: none"> <li>— DOWNLIGHT</li> <li>— DOWNLIGHT</li> </ul>	

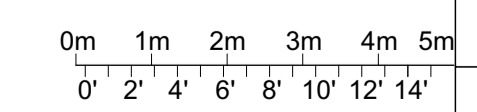
NEW LIGHTING  
EXISTING LIGHTING  
REPOSITIONED LIGHTING



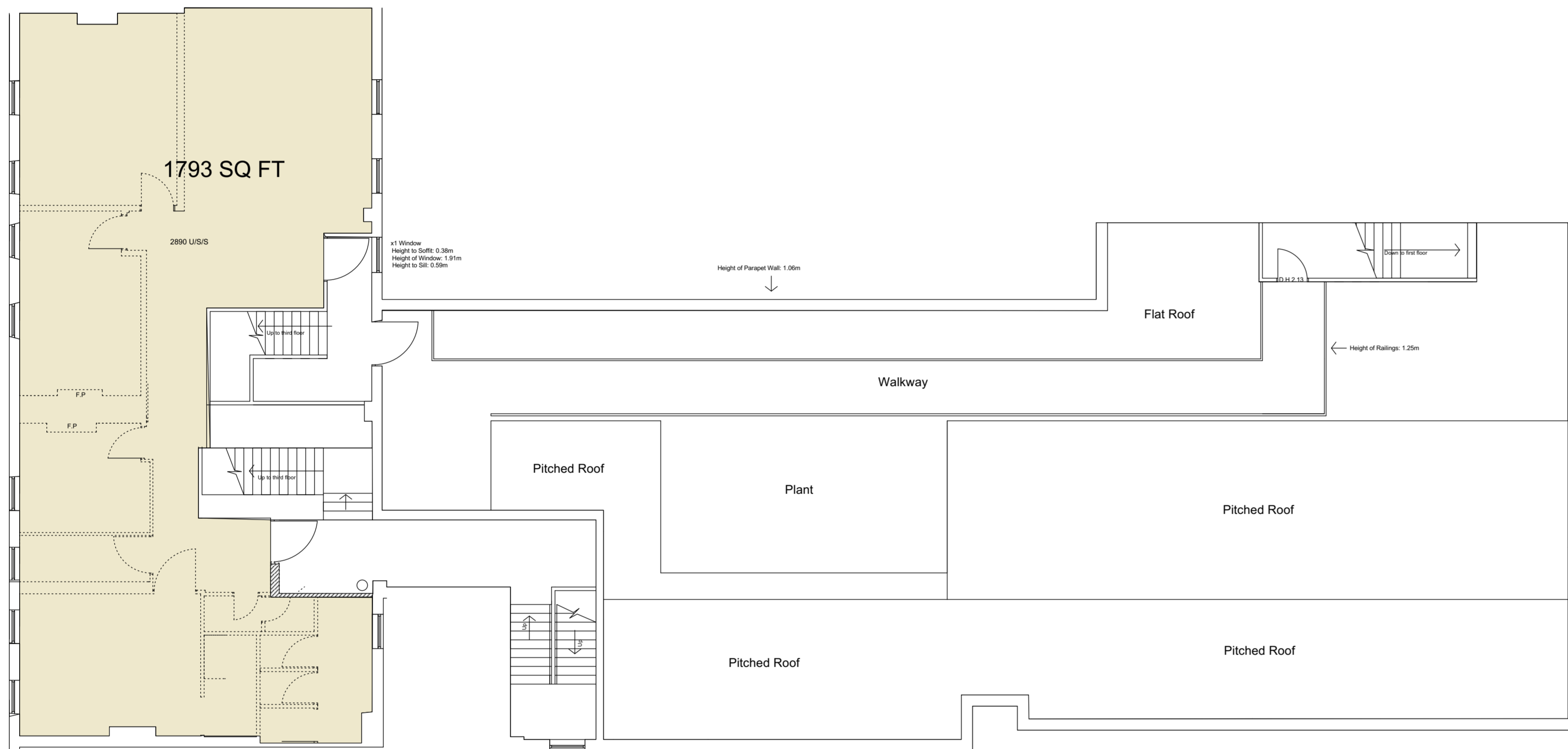
GROUND FLOOR LIGHTING

LIGHTING LEGEND	
<b>SUSPENDED</b>	<b>EMERGENCY</b>
<ul style="list-style-type: none"> <li>— SUSPENDED (BY 100mm) RECESSED LED TUBE LIGHT</li> <li>— SUSPENDED (BY 100mm) RECESSED LED TUBE LIGHT</li> </ul>	<ul style="list-style-type: none"> <li>— LED EMERGENCY IN WHITE OVER BARRIERS</li> <li>— EMERGENCY IN RED</li> <li>— IN LED EMERGENCY FITTING OVER BARRIERS</li> <li>— SUSPENDED BLACK LED EXIT OVER PASSAGE BARRIERS</li> <li>— FLUORESCENT EMERGENCY LIGHT FITTING</li> <li>— FLUORESCENT EMERGENCY EXIT LIGHT FITTING OVER BARRIERS</li> </ul>
<b>TRACK MOUNTED</b>	<b>TRACK</b>
<ul style="list-style-type: none"> <li>— PROTRUDING LED FLUORESCENT TRACK MOUNTED WHITE</li> <li>— TRACK LED TRACK MOUNTED WHITE</li> <li>— LED TRACK MOUNTED WHITE (RECESSED) TRACK MOUNTED WHITE</li> </ul>	<ul style="list-style-type: none"> <li>— WHITE SURFACE RECESSED LED TRACK</li> <li>— WHITE RECESSED SURFACE LED TRACK</li> <li>— BLACK SURFACE RECESSED LED TRACK</li> <li>— BLACK RECESSED SURFACE LED TRACK</li> <li>— BLACK SURFACE RECESSED LED TRACK</li> <li>— BLACK RECESSED SURFACE LED TRACK</li> </ul>
<b>RECESSED</b>	
<ul style="list-style-type: none"> <li>— NEW LED RECESSED DOWNLIGHT IN WHITE</li> <li>— REAR TYPICAL LED DOWNLIGHT</li> <li>— NEW LED RECESSED DOWNLIGHT IN WHITE</li> </ul>	
<b>SURFACE MOUNTED</b>	
<ul style="list-style-type: none"> <li>— DOWNLIGHT</li> <li>— DOWNLIGHT</li> </ul>	

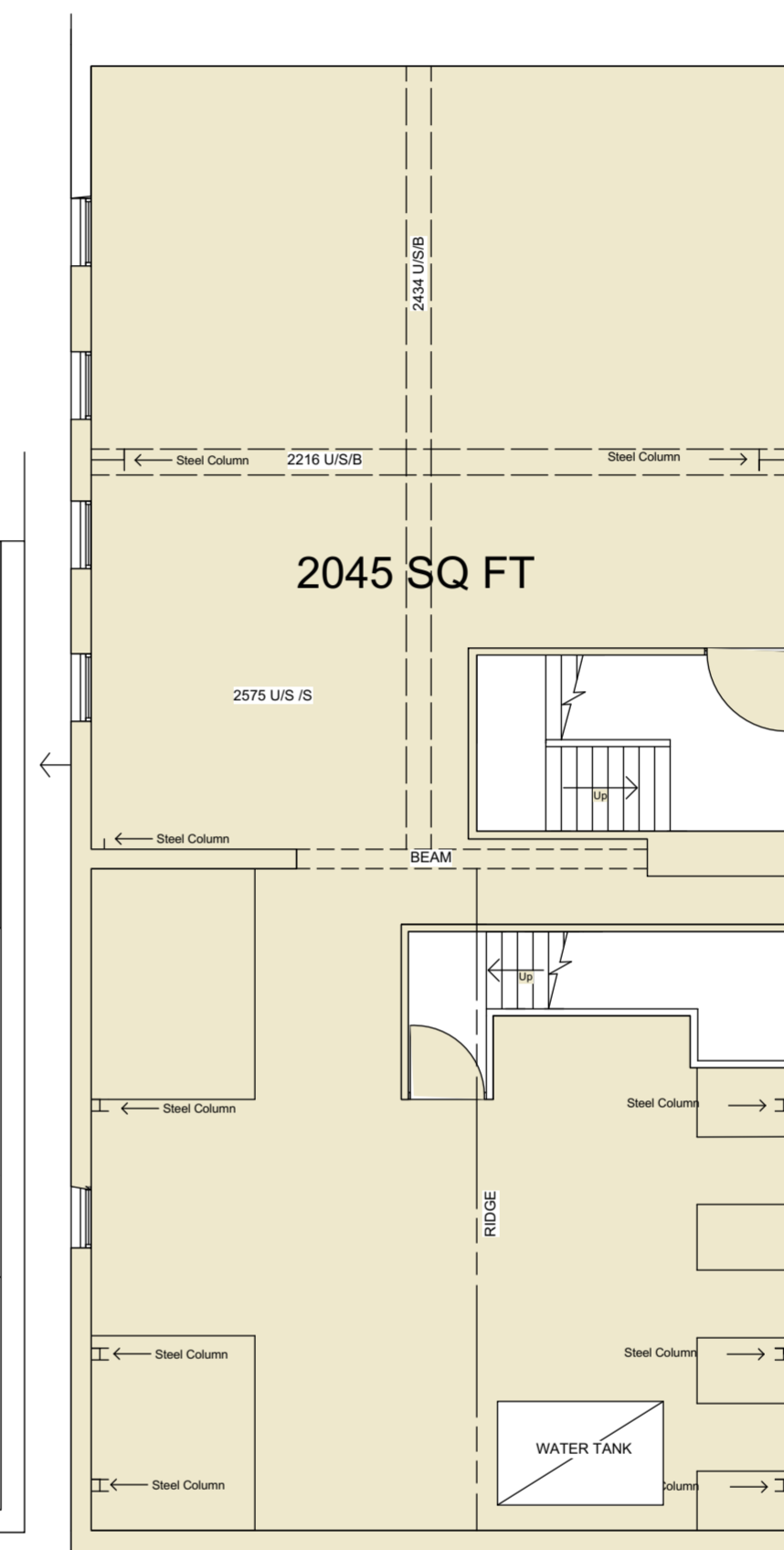
NEW LIGHTING  
EXISTING LIGHTING  
REPOSITIONED LIGHTING



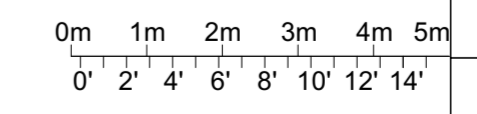
REVISIONS	DESCRIPTION	DATE	INITIAL
<b>RIVER ISLAND</b>			
T: 020 8991 4500 F: 020 8998 1171 E: cad@river-island.com Chelsea House - West Gate - London - W5 1DR			
68-70 HIGH STREET DUMFRIES			26.07.18
GROUND AND FIRST FLOOR LIGHTING			1:100 @ A1
			AJ
			872.18.02



**SECOND FLOOR PLAN**



**THIRD FLOOR PLAN**



REVISIONS	DESCRIPTION	DATE	INITIAL
<b>RIVER ISLAND</b>			
T: 020 8991 4500 F: 020 8998 1171 E: cad@river-island.com Chelsea House - West Gate - London - W5 1DR			
68-70 HIGH STREET DUMFRIES			28.04.14
EXISTING AND PROPOSED SECOND AND THIRD FLOOR			1:100 @ A1
			FT
			872.14.06